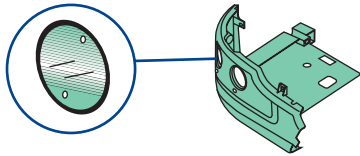


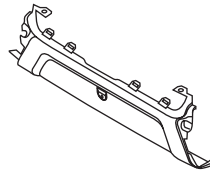
## SCANIA R CP-CG-CR

(\*) Larghezza telaio mm 1020 - chassis width 1020 mm  
Chassis: Breite 1020 Millimeter (mm)

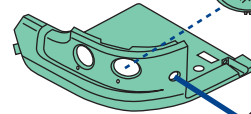
940/115  
protezione fendinebbia  
kit 4 pz.  
foglamp protection  
kit 4 pcs.  
Nebelscheinwerferschutz  
Satz 4 st.



146/ 94(\*)



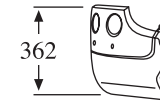
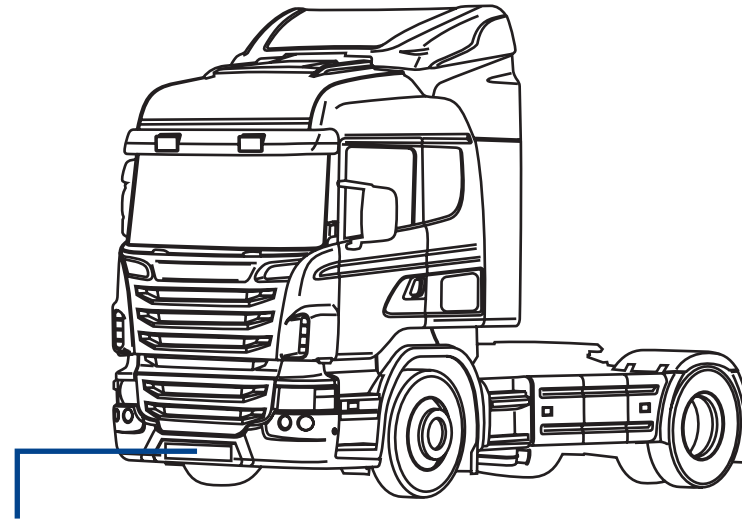
146/ 95(\*)



146/ 98 d-rh-rechts  
146/ 99 s-lh-links



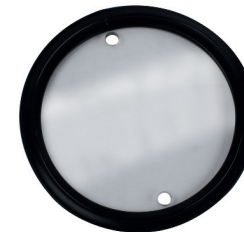
SCR/190  
d|s-rh|lh  
rechts|links



146/ 94  
O.E.M. 1884915  
146/ 95  
O.E.M. 1884914



146/ 98  
O.E.M. 2127432  
146/ 99  
O.E.M. 2127431



940/115  
O.E.M. -



SCR/190  
O.E.M. ~~1923152~~ 1853196

I codici originali sono riportati unicamente per favorire l'identificazione del prodotto | The original codes are indicated for product identification only | Die aufgeführten Originalnummer dienen ausschließlich zu Vergleichszwecken

OEMCOVIND

Tabelle Comparative :: Cross References :: Korrespondenztabelle

Cod. Originale O.E.M. Ref. OE Nummer	Cod. Covind Covind Ref. Covind Teilnummer	Pag.Cat. Page Cat. Seite	Cod. Originale O.E.M. Ref. OE Nummer	Cod. Covind Covind Ref. Covind Teilnummer	Pag.Cat. Page Cat. Seite	Cod. Originale O.E.M. Ref. OE Nummer	Cod. Covind Covind Ref. Covind Teilnummer	Pag.Cat. Page Cat. Seite
1885949	146/855	12,7	1930793	146/847	77	2054589	SCR/525	166,167,224,225
1885996	146/134	6,7,63,64	1930794	146/848	77	2054590	SCR/524	46,47,112,113, 166,167,224,225
1890176	146/131	79	1930799	146/841	78	2054601	SCR/535	52,53,120,121,174,175, 232,233,272,273,312,313
1900633	146/159	12,7	1930805	146/851	11,69	2054602	SCR/534	52,53,120,121,174,175, 232,233,272,273,312,313
1900634	146/159	12,7	1930806	146/852	11,69	2054603	SCR/529	50,51,116,117,170,171, 228,229,270,271,310,311
1900635	146/159	12,7	1930811	146/853	13,71	2054604	SCR/528	50,51,116,117,170,171, 228,229,270,271,310,311
1900636	146/159	12,7	1930812	146/854	13,71	2055972	146/160	74
1902975	144/181	246	1931613	146/ 89	-	2055973	146/161	74
1902976	144/180	246	1931614	146/ 88	-	2056867	144/516	38,40,104,106,158,160, 216,218,266,268,306,308
1904301	146/120	79	1936674	SCR/155	9,67,136,192	2057119	SCR/535	52,53,120,121,174,175, 232,233,272,273,312,313
1904301	146/121	15	1936675	SCR/154	9,67,136,192	2057120	SCR/534	52,53,120,121,174,175, 232,233,272,273,312,313
1904302	146/120	79	1942252	SCR/525	46,47,112,113, 166,167,224,225	2080828	SCR/506	34,99,153,210
1904302	146/121	15	1942253	SCR/524	46,47,112,113, 166,167,224,225	2093720	SCR/620	124,236
1904303	146/120	79	2000390	SCR/506	34,99,153,210	2093721	SCR/619	124,236
1904304	146/120	79	2005369	144/195	16,80,137,193,245,285	2097976	146/867	75
1904305	146/120	79	2005370	144/194	16,80,137,193,245,285	2097977	146/866	75
1904305	146/121	15	2008861	SCP/110	15,134	2124011	SCP/159	9,67,136,192
1904306	146/120	79	2026619	SCR/522	106,160,218,268,308	2124015	SCR/157	67,192
1904306	146/121	15	2026621	SCR/522	106,160,218,268,308	2126392	146/ 91	6,7,63,64
1904814	SCP/110	15,134	2031054	146/ 89	-	2126955	146/165	75
1917216	146/115	72	2031055	146/ 88	-	2126956	146/164	75
<del>1923152</del>	<del>SCR/190</del>	<del>59,130,131,184,185</del>	2031866	SCP/ 50	15,134	2127431	146/ 89	-
1923742	146/193	5,65	2052117	SCR/505	34,99,153,211	2127432	146/ 88	-
1923743	146/192	5,65	2054579	SCR/527	48,49,114,115, 168,169,226,227	2145647	144/195	16,80,137,193,245,285
1923744	146/ 93	62	2054580	SCR/526	48,49,114,115, 168,169,226,227	2145648	144/194	16,80,137,193,245,285
1923745	146/ 92	62	2054581	SCR/531	42,43,108,109, 162,163,220,221	2146221	146/120	79
1926448	146/196	8,66	2054582	SCR/530	42,43,108,109, 162,163,220,221			
1927257	SCR/531	42,43,108,109, 162,163,220,221	2054589	SCR/525	46,47,112,113,			
1927258	SCR/530	42,43,108,109, 162,163,220,221						
1929904	146/198	66						
1930649	144/ 9	18,82,139,195,247,287						
1930792	146/846	77						

## COVINDOEM

## Tabelle Comparative :: Cross References :: Korrespondenztabelle

Cod. Covind Covind Ref. Covind Teilnummer	Cod. Originale O.E.M. Ref. OE Nummer	Pag.Cat. Page Cat. Seite	Cod. Covind Covind Ref. Covind Teilnummer	Cod. Originale O.E.M. Ref. OE Nummer	Pag.Cat. Page Cat. Seite	Cod. Covind Covind Ref. Covind Teilnummer	Cod. Originale O.E.M. Ref. OE Nummer	Pag.Cat. Page Cat. Seite
SCP/110	1904814	15,134	SCR/ 98	1523882	3,60,130,184	SCR/152	1459142	132,133,186,190
SCP/141	1466035	135	SCR/ 99	1786692	3,60,130,184	SCR/153	-	133,19
SCP/142	1466034	135	SCR/ 99	1523881	3,60,130,184	SCR/154	1936675	9,67,136,192
SCP/145	1543607	134	SCR/100	1763296	127,181	SCR/154	1431921	9,67,136,192
SCP/158	1438564	9,67,136,192	SCR/100	1422843	127,181	SCR/154	1790007	9,67,136,192
SCP/159	2124011	9,67,136,192	SCR/100	1731206	127,181	SCR/155	1936674	9,67,136,192
SCP/159	1438563	9,67,136,192	SCR/115	1804628	188	SCR/155	1431920	9,67,136,192
SCP/160	2165864	14	SCR/115	1451246	188	SCR/155	1790006	9,67,136,192
SCP/160	1543609	14	SCR/115	1721731	188	SCR/156	1431923	67,192
SCP/161	2165863	14	SCR/115	1746585	188	SCR/157	2124015	67,192
SCP/161	1543608	14	SCR/130	1748086	133	SCR/157	1431922	67,192
SCP/164	1856472	14	SCR/130	1743177	133	SCR/158	1727992	136,192
SCP/164	1496294	14	SCR/131	1459146	133	SCR/158	1438558	136,192
SCP/165	1856473	14	SCR/134	1742265	132,186	SCR/159	1727991	136,192
SCP/165	1496293	14	SCR/134	1543308	132,186	SCR/159	1438557	136,192
SCR/ 2	1476535	80,193,285	SCR/135	1742264	132,186	SCR/160	1751406	73,191
SCR/ 2	1452666	80,193,285	SCR/135	1543307	132,186	SCR/160	1538385	73,191
SCR/ 2	1739743	80,193,285	SCR/140	1748085	187,19	SCR/161	1751405	73,191,276
SCR/ 3	1476534	80,193,285	SCR/140	1459488	187,19	SCR/161	1538384	73,191,276
SCR/ 3	1452665	80,193,285	SCR/140	1743176	187,19	SCR/164	1856474	73,191
SCR/ 3	1739740	80,193,285	SCR/140	1743176	187,19	SCR/164	1495957	73,191
SCR/ 50	1435542	72,188	SCR/141	1459145	187,19	SCR/164	1749717	73,191
SCR/ 88	1495578	128,182	SCR/142	-	190	SCR/164	1749717	73,191
SCR/ 89	1495577	128,182	SCR/143	1466032	189,19	SCR/164	1798864	73,191
SCR/ 90	1504131	128,182	SCR/144	1466031	189,19	SCR/165	1856475	73,191
SCR/ 92	1439789	129,183	SCR/145	1880736	188,19	SCR/165	1495956	73,191
SCR/ 93	1439788	129,183	SCR/145	1538383	188,19	SCR/165	1749716	73,191
SCR/ 94	1853347	131,185	SCR/145	1755594	188,19	SCR/165	1798863	73,191
SCR/ 94	1431926	131,185	SCR/146	1459133	189,19	<del>SCR/190</del>	<del>1923152</del>	<del>59,130,131,184,185</del>
SCR/ 95	1853346	131,185	SCR/147	1880737	135,189,190	SCR/190	1853196	59,130,131,184,185
SCR/ 95	1431925	131,185	SCR/147	1459134	135,189,190	SCR/192	1853194	130,184
SCR/ 96	1523509	3,60,129,183	SCR/148	1459135	135,189,190	SCR/193	1853193	130,184
SCR/ 97	1523508	3,60,129,183	SCR/149	-	190	SCR/194	-	16,80,137,193,245,285
SCR/ 98	1786693	3,60,130,184	SCR/150	1536807	132,133,186,190	SCR/195	-	16,80,137,193,245,285
			SCR/151	1459141	132,133,186,190	SCR/200	1485486	-